



**RIDE
WITH THE
SURGING
POWER**

WHEELED TRACTOR

**RG SERIES
1804**

**PT BUMI CITRA TRAKTOR NUSANTARA
Head Office**

WTC Mangga Dua, Lantai 3A,
Jl. Mangga Dua Raya No. 8, Kel. Ancol, Kec. Pademangan,
Jakarta Utara, 14430. **Telp.** (021) 3001 2318 ext 201

Branch Office

- Jakarta
- Pekanbaru
- Surabaya
- Jambi
- Medan



BCTN CONNECT
08111388686

More Info :

- f PT. Bumi Citra Traktor Nusantara
- @ bctn.official
- PT Bumi Citra Traktor Nusantara (BCTN)
- admin.service@bctn.co.id

WHEELED TRACTOR

RG Series 1804

The new RG1804 not only has strong performance in terms of strong lifting capacity and traction ability on slopes, but also has industry-leading innovations in driving experience and ease of use, allowing you to have extremely high efficiency and absolute advantages at work.

PRODUCT FEATURE

CONVENIENT MANEUVERING, SURGING POWER

- Sensors monitor the whole vehicle in real time, with setting and query functions, to grasp the engine status at any time.
- Full hydraulic drive steering system, timely repair of the body;
- Brake is equipped with mechanical synchronization device, which can realize flexible switching of unilateral/bilateral braking;
- 180/200 horsepower, six-cylinder turbocharged engine, strong power;
- Equipped with Bosch electronically controlled direct injection technology, which can accurately control the fuel supply, ensuring economy while maintaining a strong power output;
- 375 L fuel tank volume, can meet the whole day of continuous operation.

EASY TO SHIFT, DURABLE AND RELIABLE

- 16F+16R gears, with a variety of operating speeds;
- Side-mounted maneuvering, light and flexible shifting;
- The main and auxiliary gears are separately operated by two joysticks, and the forward speed is 2.43-32.42km/h, and the reverse speed is 1.71-22.81km/h, which meets different field operation;
- The transmission lubrication method is forced lubrication, which improves the lubrication effect, service life and reliability;
- Dry independently operated double-acting clutch can independently operate the traveling system and PTO.

HIGH ADAPTABILITY AND VERSATILITY

- 540/1000 r/min PTO speed;
- Meet the fixed towing and pendulum towing, fixed towing height multi-level adjustable, adaptable to a variety of agricultural implements;
- Three sets of hydraulic outputs, optional four sets of hydraulic outputs, adapting to the operational needs of different agricultural implements;
- Rear Class III three-point suspension device, meet the position adjustment, floating control, matching a variety of composite agricultural implements;
- Equipped with two double-acting cylinders of split hydraulic lifting system, lifting force 40 kN.

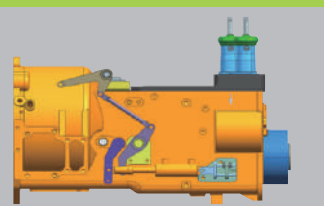


PRODUCT PARAMETERS

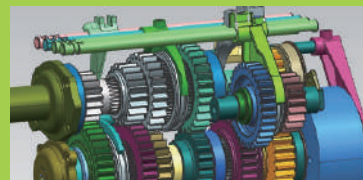
	Unit	RG1804
Overall dimension (length × width × height)	mm	5490×2430×3200
Wheelbase	mm	2775
Minimum mass during operation	kg	7050 (standard tires) 7800 (rear double row wheel)
Minimum ground clearance	mm	490
Engine emission	/	National III
Rated power	kW	132.4
Fuel consumption rate	g/kW·h	≤250
Clutch type	/	Dry type, independent control double action
Number of gears of the gearbox	/	16F+16R engaging sleeve shifting
Tyre size	/	16.9-28/20.8-38
Type of hydraulic lifting system	/	Split lifter
Maximum lifting force	kN	63.2
Tillage control method	/	Position adjustment, height adjustment, strong pressure
Hydraulic output multiway valve	/	3 sets
Hydraulic hitch	/	Rear three-point suspension, Class III
Traction force	kN	61
PTO output power	kW	113
Power output speed	r/min	540/1000rpm
Cab	/	Air-conditioned cab



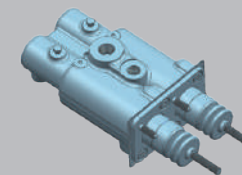
Side-mounted operation



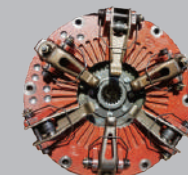
Hydraulic clutch booster operation



Primary and secondary gearbox structure



Brake hydrostatic cylinder



Double acting clutch